

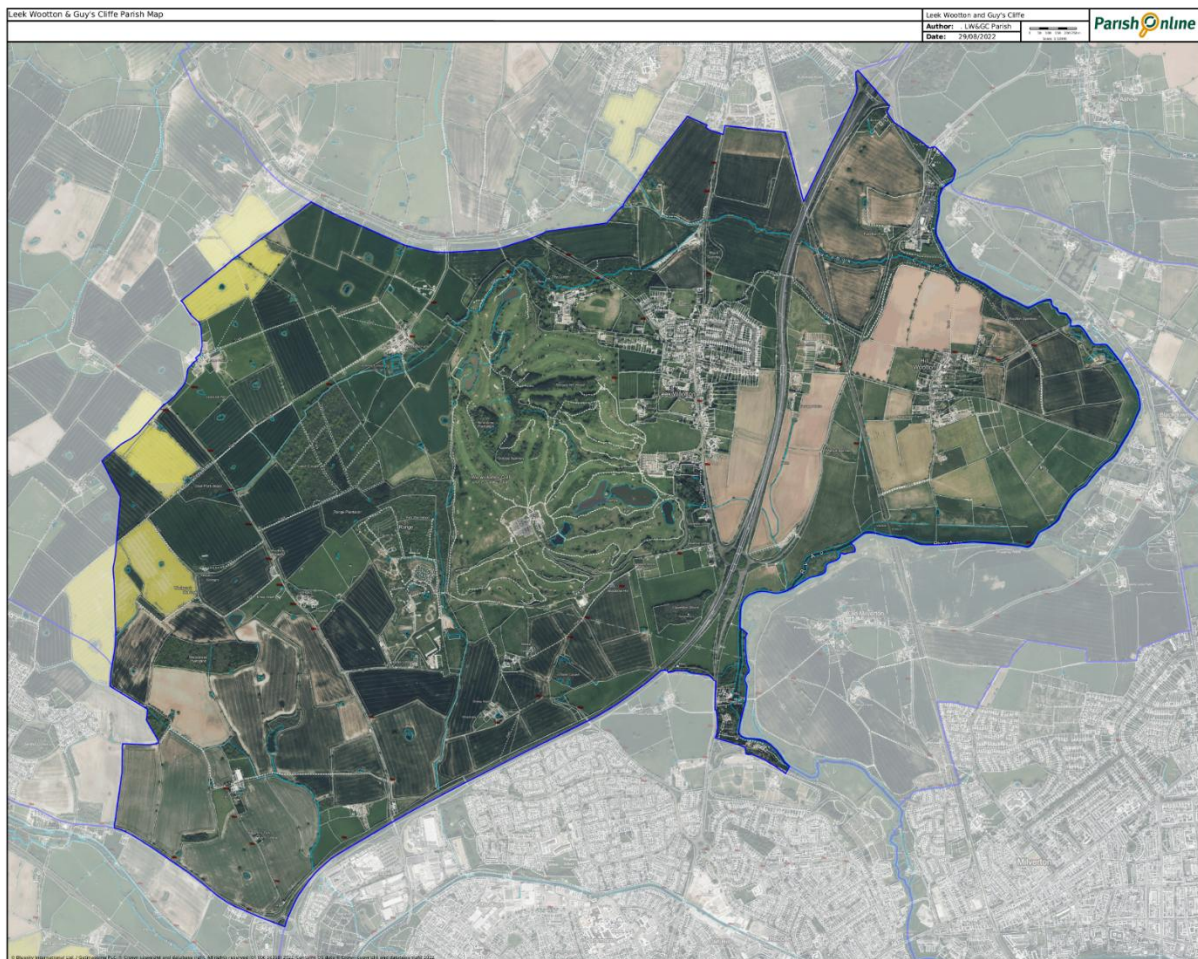
LEEK WOOTTON & GUY'S CLIFFE PARISH COUNCIL

Annual Parish Assembly



Wednesday, 26 March 2025 at 7:00pm
All Saints' Church, Leek Wootton

Reports 2024/25



CONTENTS

PARISH PROFILE	3
PARISH COUNCIL REPORTS	3
Chairman's Report 2024/25	3
Financial Report for the Year Ended 31 March 2025	5
REPORTS FROM COUNTY & DISTRICT COUNCILLORS	7
Warwickshire County Council: Cubbington & Leek Wootton Division	7
Warwick District Council: Cubbington & Leek Wootton Ward	7
REPORTS FROM PARISH ORGANISATIONS	9
1 st Leek Wootton (All Saints') Brownies & Guides [NO REPORT]	9
1 st Leek Wootton (Centenary) Scout Group [NO REPORT]	9
All Saints' Church, Leek Wootton	9
All Saints' Church of England Academy Leek Wootton [NO REPORT]	9
All Saints' Leek Wootton Mothers' Union Friendship Group	9
Bring Back Guy's Cliffe	10
Cancer Research UK Leek Wootton Branch [NO REPORT]	10
Friends of All Saints' Church	10
Kenilworth Probus I Club	10
Leek Wootton & Guy's Cliffe Parish <i>Community Live!</i> [NO REPORT]	11
Leek Wootton & Guy's Cliffe Parish Environment Group [NO REPORT]	11
Leek Wootton Baby & Toddler Group	11
Leek Wootton Focus Group	11
Leek Wootton Gardening Club	12
Leek Wootton History Group	12
Leek Wootton Link	12
Leek Wootton Sports Club	12
Leek Wootton Village Hall Committee	13
Leek Wootton War Memorial Recreation Ground [NO REPORT]	14
Leek Wootton Women's Institute [NO REPORT]	14
The Leigh Educational Foundation [NO REPORT]	14
MacMillan Cancer Support Leek Wootton and Kenilworth [NO REPORT]	14
Neighbourhood Watch [NO REPORT]	14
Safer Neighbourhoods Team, Warwick Rural West [NO REPORT]	14
Young at Heart [NO REPORT]	14

PARISH PROFILE

Description of the Parish

The Parish lies in the triangle formed by Kenilworth, Leamington and Warwick, containing surrounding green belt land and, since boundary changes on 1 April 2015, now extends to the south-west as far as the Warwick Bypass (A46) intersection with the Birmingham Road (A425).

The Parish includes the village of Leek Wootton and the hamlets of Guy's Cliffe and Hill Wootton, together with Chesford, Goodrest, Middle and North Woodloes and Wedgnock.

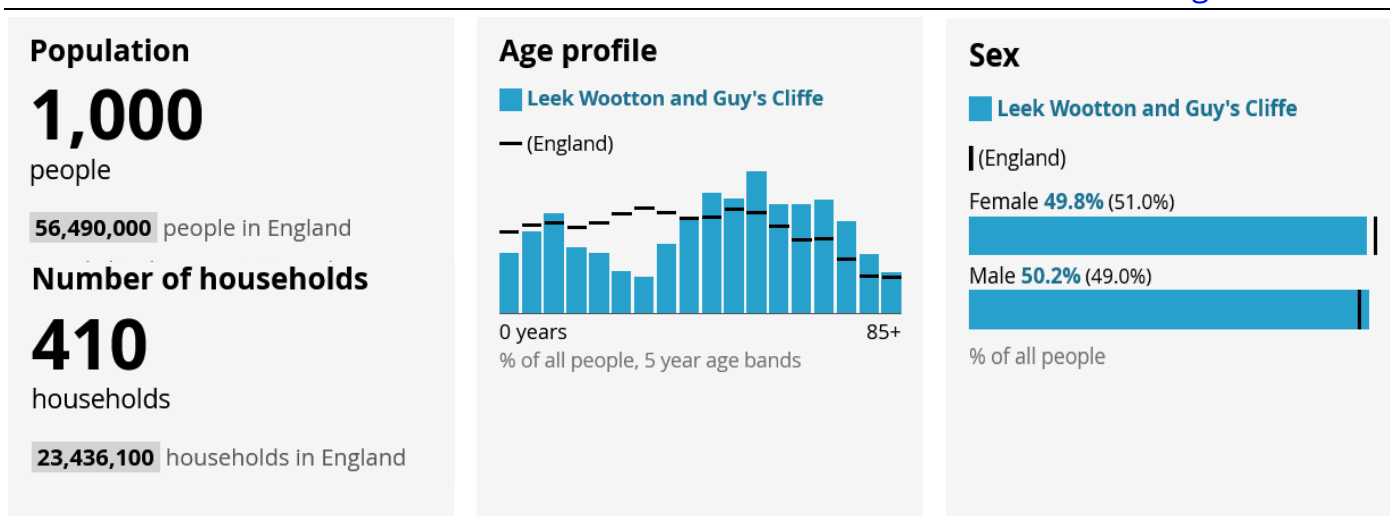
The nearest railway stations are Warwick (town) and Warwick Parkway. Birmingham International Airport is 12 miles. Access to the M40 is at junction 15 (4½ miles) to the south via the A46.

Parish Electorate

Approximately 772 names appear on the Register of Electors for 2025. The area covers in excess of 1,100 hectares and the total population is approximately 1,100.

Office for National Statistics: Census 2021 Data

www.ons.gov.uk/census



Rounded to the nearest 10 people and households

PARISH COUNCIL REPORTS

Chairman's Report 2024/25

Councillor Richard Coates

e: CllrCoates@leekwoottonandguyscliffeparish.gov.uk

I'd like to start with an update on the hot topic from last year's meeting which was the CALA Homes development. Since we last met CALA has submitted a detailed planning application No W/24/1006 in an attempt to complete the application which was granted outline planning permission in early 2024.

Today this application is still active having received several comments and objections from the community, Parish Council [PC] and County consultees. The PC has been monitoring progress where it can but has had no more information from either CALA or Warwick District Council [WDC] other than that the application is still live. No dates have yet been given for the officers' recommendations nor for the planning committee which will consider the application. So the 'watch this space' goes on and we continue to express frustration at not knowing.

The PC received costs of £6,000 from the Inspector at the Appeal as a result of the mistake WDC made in housing assessment needs. This caused additional legal costs at the subsequent Inquiry in January of last year and the money obtained was shared appropriately as a percentage of what the various parties put in.

Whilst on the subject of planning, may I thank those of you who responded in such large numbers to both the SWLP Preferred Options Consultation and the recent police carparking masterplan at HQ. It is so important to see a vibrant community interest in these proposals and there is no doubt that your thoughts and points of view are taken seriously. We are aware that developers are circling about and the Preferred Options Consultation has surprised many of us. The potential encroachment from Kenilworth, Old Milverton and Warwick together with an increased village footprint is a real concern with the possible loss of Green Belt and our village integrity. We must all be vigilant and your PC will continue to do what it can for our mutual benefit.

Those of you that have seen the recent Police masterplan for HQ will have noticed that it did not include anything about The Lunch Woodland. It's our belief the police don't really know what to do with it nor it seems, do they care much about it? That has brought about a conversation between us and the Chief Executive of WDC Chris Elliott, who suggested we both, together with the Police, set up a working group to begin formulating a sustainable, strategic plan for The Lunch as a community asset on into the future. What this will exactly entail is not certain and this group has not yet been constituted.

It seems no time at all that I was giving my report last year and, like every year when you're my age, time goes in an instant.

I can report however on the success of so many of our community endeavours last year:

- A smaller but no less enjoyable Parish Fête in June which this year will be merging with the VE Day celebrations
- A third *Community Live!* event in September highlighting the numerous clubs and activities available in our area
- The many charitable occasions such as Jim and Jean's Big Breakfast, Cancer Research and WI events
- The laying out of the new wildflower area next to the carpark and installation of bird and bat boxes
- The Leek Wootton Focus Group under Harry Wilson's leadership which continued to remind us of our environmental responsibilities
- Our Parish Council Grant Fund which supports community activities notably the new cricket nets initiative
- And not forgetting the church teas and teddy bear parachute drop to mention just a few...

One new initiative was a very successful series of courses supported by the British Heart Foundation on CPR and how to use a defibrillator – so much so that these will be running again this autumn and my thanks to Joy Morgan for getting this initiative going. (Don't forget our defibrillator is on the wall field side of the Village Hall)

The Sports Club with its football and cricket teams continue to thrive and Village Hall bookings are testament to its value for money and venue appeal. As you know the Recreation Ground on which they both sit is managed by a dedicated group of Trustees who, like many, are finding that age and a lack of voluntary help is taking its toll so if there is anyone out there who feels they can help and give time and become a Trustee please get in touch with me via my PC email.

Finally, on to a few matters concerning the individual members of the Parish Council. My sincere thanks go to David Elsy who resigned last month and is moving on to pastures new. I am grateful for his representation of Hill Wootton and his invaluable service on our Finance and Environment committees.

We do have a new, young replacement though, Elisa Harrold who was co-opted on to the PC this month. Elisa's background is in strategic design planning and she hopes to strengthen community engagement and communication whilst also caring, maintaining and improving our local environment. She doesn't seem too daunted by joining a group of oldies and I welcome that. Does she know what she's letting herself in for?

And now to some worthy congratulating! As you will all see in an article in the next Link, Councillor Paul Eldridge has served the PC for 40 years this January. This is a remarkable achievement of volunteering and community service. My stint is a trifling 18 years in comparison and he has only got three more years to overtake the record of 43 years by a Mr Cattel in the early 1900s.

It goes without saying that once again we are indebted to our Clerk, Helen Eldridge. Her cool efficiency and tireless application keeps us all on track and I don't know whether you know this but she is now also Clerk for our neighbouring parishes, Old Milverton and Blackdown – double the trouble but she manages brilliantly and we look forward to sharing experience on mutual issues and areas of concern.

Lastly, I come to a key question I ask every year. Vitality in the volunteers on a Parish Council is a key to its success and I'm not saying current councillors don't have lots of it but we still need more help – if there is anyone here wondering about volunteering, giving something to our community and joining a group of like-minded and friendly individuals – why not give the Parish Council a try? We currently have 6 Councillors when we are entitled to 8 and we would truly appreciate your help. We meet ten times a year and the work is entirely what you make it. We all have differing talents and skills and yours could be exactly what we need. Please don't hesitate – have a go. It's just what I did 18 years ago and look at me now!!!

Financial Report for the Year Ended 31 March 2025

Helen Eldridge, Responsible Financial Officer e: clerk@leekwoottonandguyscliffeparish.gov.uk

FINANCIAL REPORT

The Parish Council's gross income in 2024/25 was £42,080 and expenditure £32,908.

The Precept income, which is the core income of the PC, was £31,000. Other income included donations, interest, reclaimed VAT, court costs awarded against WDC and a CIL payment. Precept expenditure was £30,178. Other expenditure was from the biodiversity fund, car park loan repayments fund and car park maintenance fund.

INCOME

Donations

Donations received in 2024/25 include £750 in contributions towards the Car Park Maintenance Fund by the stakeholders (Leek Wootton Village Hall, Leek Wootton Sports Club and The Trustees of LW War Memorial Recreation Ground. Leek Wootton Village Hall also made a £390 contribution towards the grounds maintenance contract for mowing of the village hall garden.

Interest

The Car Park Maintenance Fund is held in a newly opened Commercial Instant Access Saving Account. In 2024/25 this account generated £13 interest. This is the only interest received by the PC.

Reclaimed Vat

Other income to the Council was the recovery of VAT, to which the Council is entitled. £3,447 has been claimed in 2024/25, and at 31 March 2025 there is an outstanding claim to the value of £584.

Court Costs Awarded Against WDC

The Planning Appeal (Ref. APP/T3725/W/23/3319752 Land at Warwickshire Police Headquarters) Rule 6 Party, being made up of Leek Wootton Focus Group and the PC applied for a partial award of costs against Warwick District Council. This was because WDC did not inform the parties that they would be publishing revised data 5-year supply of deliverable housing land before the start of the Inquiry or that it had been published. The Planning Inspector awarded costs for the expenses incurred by the extension of the case accordingly. The PC claimed the full costs (£6,000) and redistributed it with the Focus Group, retaining £750.

Community Infrastructure Levy [CIL]

In 2024/25 the PC received CIL of £6,891. CIL is a levy on new developments and this figure was generated by one new-build house on Warwick Road, Leek Wootton. This money is ringfenced and may only be spent on community infrastructure within 5 years. The PC will begin a consultation process with the community at the Annual Parish Assembly 2025.

EXPENDITURE

Leek Wootton War Memorial Recreation Ground Car Park

The car park refurbishment completed in 2023/24 was in-part funded by a Public Works Loan Board loan (£22,861) and the PC has begun paying this back twice a year. This year it has paid back £2,310. In the future the PC hopes to pay back more than required and thereby speed up the payback process.

Events

Expenditure on events has been minimal this year, partly due to accumulation of general supplies in previous years. A small-scale Parish Summer Fête was held in June in poor weather. September saw the return of the Community Live! event and October saw a series of Emergency Life Skills Training sessions. All events required minimal financial investment totalling £238, including venue hire, promotional materials and refreshments.

Community Grant Fund

The Council has in place a Community Grant Fund for organisations to apply to for small grants. During 2024/25 the Council was pleased to award the full allocations to the following applicants:

- an application was made by Leek Wootton Village Hall for solar/PIR lights for pedestrians arriving at the village hall on foot (£97); Leek Wootton Cricket Club for contribution to new cricket nets (£300 + remainder of the 2024/25 Grant Fund at the end of the year, £503); Leek Wootton Sports Club for contribution towards the refurbishment of the toilets (£300), and;

- the regular grant of £300 was made to the *Leek Wootton Link*, which the Council supports to ensure it is delivered to every household in the civil parish as a key conduit in communication with the community.

Other Funds

At 31 March 2025 the following funds are open:

- LWWMRG Car Park Refurbishment/PWLB Loan Repayment:
The Car Park Refurbishment Fund has been ring-fenced and, with the completion of the refurbishment and lighting in March 2024, is now assigned to the repayment of the Public Works Loans Board loan. This fund currently holds £364, with repayment contributions to be made from future Precept.
- LWWMRG Car Park Maintenance:
The Recreation Ground stakeholders have agreed to contribute towards a maintenance fund for future maintenance work. This fund is held in a separate saving account. In 2024/25 £1,013 has been received and £97 spent to maintain the car park markings, bringing the current balance to £1,917.
- Biodiversity:
Set up in 2023/24 and used to contribute towards the biodiversity area on the recreation ground. £315 spent in 2024/25 bringing current balance to £533

Unexpected Expenditure

- The PC was required to award its grounds maintenance contract at short notice when the previous contractor withdrew from the second year of its contract. The decision was taken to ensure that some additional jobs were included in the new contract and following the usual tendering process the contract was awarded to Thomas Fox Landscaping. The increase in the contract caused an overspend of £1,995 against the amount budgeted.
- The PC was encouraged by the Government and County Association to adopt a .gov.uk domain name and it was decided to go ahead with this in Summer 2024. A contract was awarded to Midland Computers (a .gov.uk approved registrar) and the PC benefited from bringing its IT provision (website and all emails) together under a single domain. Whilst savings were made with the cancellation of the old website contract, the overall expenditure was £1,411 over the amount budgeted.

OTHER FINANCE

General Reserves

The Council's Accounts for 2023/24 were audited by an external auditor because annual turnover exceeded £25,000. In the feedback, the Auditors commented on the low level of general reserves held by the Council. The PC was already aware of the depleted reserves and has budgeted to boost its reserves, which should be sufficient for the PC to run for at least 1 year. On 31 March 2025 General Reserves are £6,036, in comparison to £3,954 on 31 March 2024.

Income Over Expenditure

On 31 March 2025, the PC's income over expenditure for 2024/25 is £9,173 and the balance at 31 March 2025 is £18,079, including the Council's various reserves and funds. Income over expenditure is high because of the reasons set out above, most notably unspent income being £6,891 in CIL (ringfenced), costs awarded (£750), car park maintenance contributions (£750), and planned increase in general reserves (£2,082).

REPORTS FROM COUNTY & DISTRICT COUNCILLORS

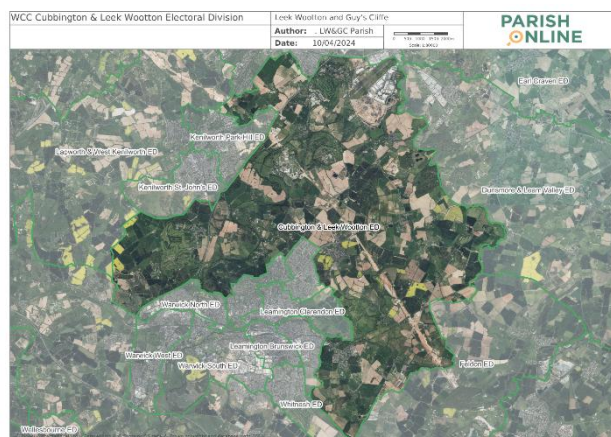
**Warwickshire County Council: Cubbington & Leek Wootton Division**

County Councillor Wallace Redford

www.warwickshire.gov.uk**Warwickshire County Council is in the pre-election period at this time**

During this period the County Council will continue to undertake its functions and to a large extent it will be "business as usual". However, in order to avoid matters that may be politically controversial or considered to be 'electioneering' there are strict statutory rules about the use of Council resources and Council publicity during this period.

For the same reasons, Councillors are also restricted from making public statements during the pre-election period.

**Warwick District Council: Cubbington & Leek Wootton Ward**

District Councillors Pamela Redford and Josh Payne

www.warwick-dc.gov.uk**Council Tax**

I am saddened to report that once again the current administration has decided to raise the Community Tax charge by 2.99% for the coming year, which means approximately £5 for a band 'D' household.

Devolution

On 16 December 2024, the Government published the English Devolution White Paper. This White Paper identifies the Government's intended approach to the devolution of powers from Westminster to more local "Strategic Authorities".

The White Paper was clear that to achieve objectives surrounding devolution this will also require Local Government Review. This review would result in the abolition of the remaining two-tier local government across the country and establishing unitary government in their place.

I cannot give more information at this time, as clearly the County and District and Borough Councils are in talks about how the Warwickshire plans will move forward. I will of course keep you updated when there are more definitive plans.

Community Wardens

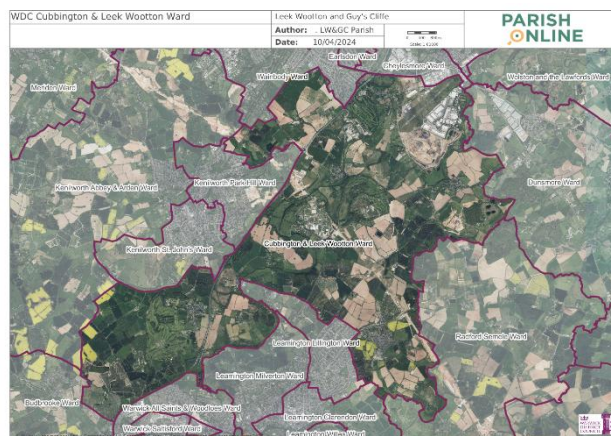
This is a new service which has been in operation for nearly twelve months. The wardens make regular patrols around our local towns and where there are specific problems such as Anti-social behaviour issues, the wardens will make patrols in those areas, it is hoped that the Wardens will also be able to cover some of the rural areas where problems occur. At the recent Council meeting it was agreed to further fund this service for another year.

Fly-tipping

This is a continuing nuisance to the whole district, but now with the enhanced fly-tipping team the rubbish left on our verges and lay-bys will continue to be collected at pace. Can I urge everyone when you see a fly-tip mess please do not hesitate to call WDC and report it. Take a photograph, if possible, with a date on it and send with your report.

South Warwickshire Local Plan

The emerging local plan has now reached the Preferred Option stage and at the moment the document indicating the 'preferred options' is in its Consultation stage, the Consultation started in January and runs until



midnight on 7th March. I urge you to give your opinions on the options, the more residents completing the Consultation document the more our planning officers will be able to have a fair idea of residents' views, which will help to guide their decision. There will be other Consultations as the review moves on. The new Local plan will run from 2029 -2050.

Affordable housing

Warwick District Council remains committed to its objective to deliver affordable, high quality and low carbon housing for the town of Kenilworth following its acquisition of the former Kenilworth School sites at Rouncil Lane and Leyes Lane.

To this end the Council has identified three key ambitions:

- For a significant percentage to be affordable, as part WDC's commitment to address the national housing crisis, with a minimum target of 40%
- To create exemplar low carbon homes and as part of this to thoroughly assess the potential for Passivhaus and other low energy approaches
- That these developments should complement the local Kenilworth community
- To guide the Council in the development of their vision Spruce Retrofit has been appointed. The specialists will provide advice on low cost, low carbon options and the potential for Passivhaus developments for the sites, which go beyond the requirements of the Council's newly adopted net zero Development Plan Document

Renovation of WDC Paddling Pools

Work will be starting very shortly on renovating the children's paddling pool in St Nicholas Park, Warwick and hopefully will be completed for the summer months.

WDC Events

Once again, this year is significant for our Armed Forces and our Country. 2025 is the 80th Anniversary of both VE day in May and VJ Day in August. On 28 June WDC is hosting an Armed Forces Day event as we did last year. This year the event will take place in the Pump Room Gardens in Leamington. We are planning a march past from the parade to the Pump Room Gardens and a salute of the Armed Forces taking place at the Memorial. As the Armed Forces Champion, I hope that many of you will join with WDC in these events, as a thank you to our Armed Forces of today, and our veterans of the past.

County Council Elections, 1 May

Finally, just a reminder of the WCC elections on 1 May 2025. Please remember that you will need to take along your personal identification with you if you wish to vote, i.e. passport or driving licence, or you can apply for a certificate of identity from WDC. If you have any queries about identification, please contact elections@warwickdc.gov.uk or ring 01926 456105.

As your District Councillor you can be assured, I will continue to work on your behalf.

D/Cllr Pam Redford

REPORTS FROM PARISH ORGANISATIONS



1st Leek Wootton (All Saints') Brownies & Guides [NO REPORT]

No report received

www.facebook.com/LWbrowniesguides



1st Leek Wootton (Centenary) Scout Group [NO REPORT]

No report received

www.leekwoottonscoutgroup.co.uk



All Saints' Church, Leek Wootton

Chris de Wolf, Secretary to the PCC

admin@leekwoottonchurch.co.uk

Throughout this current year the Parochial Church Council [PCC] has been concentrating on securing the future at All Saints' Church, with the knowledge of Reverend Jim Perryman's retirement in January 2025. The PCC has already started looking to secure new ways of increasing interest in the church through several initiatives, such as the Friends of All Saints' Church, which aims to raise money to help pay for repairs to the church fabric. But the PCC has also been discussing how to begin the next chapter of All Saints' Church life by preparing for a new incumbent. With Jim's retirement the services have been led by a new team, so services will continue without disruption, but this is hopefully temporary until a new vicar is appointed.

There have been a few repairs and updates to the church fabric, such as a new flagpole for the tower, new bicycle racks near the porch and repairs to the east gate. We still have one faculty of updating the bell tower handrail and will be looking at some required updates to the bells.

Continuing into 2025, we will be focusing on creating a profile of our parish to attract a suitable new candidate.

Choir (Graham Stevens)

Choir activity is restricted to singing at the two Christmas Carol services. We had a choir of some 25 enthusiastic singers. Thank you all who sang for Christmas 2024 and we look forward to more happy times together singing the Christmas music.

Flower Team (Joan Stevens)

Unfortunately my involvement in both the altar flowers and church festival decorations have become increasingly difficult. However, for those who regularly provide the flowers for the altar, thank you. There are always some empty slots to fill, so more volunteers are always welcome. A big thank you to 'the team' who regularly turn out to enhance the beauty of the church. A special thank you to Kay Wakeman, who has volunteered to take over the coordination of this activity.

Joan Stevens died on 25 February. The Churchwardens express their gratitude for all the gifts and talents that she shared with us.



All Saints' Church of England Academy Leek Wootton [NO REPORT]

Helen Rose, Head Teacher

www.allsaints-leekwootton.covmat.org



All Saints' Leek Wootton Mothers' Union Friendship Group

Janet Jackson, Contact

e: mu@leekwoottonchurch.co.uk

All Saints' Leek Wootton Mothers' Union Friendship Group is made up of Diocesan MU members who are linked together through All Saints' Church and our parish. MU in our diocese and worldwide supports family life, women and communities. Annual membership subscriptions support MU's work and fundraising, there is news in *The Link* magazine and we can participate in events in our wider area. Individual members in everyday life endeavour to support community life and have also supported the Leek Wootton Baby & Toddler and Young at Heart groups, provided gifts for prisoners' children and shoeboxes and collected baby/toddler equipment and clothes/shoes to pass on to Paul Morris, our Diocesan President Karen's husband, who supports homeless projects in Coventry.

Members and friends gathered at The Anchor for a meal and celebrated Greta's birthday.

MU encourages the support of family life and, for many years, has been the inspiration for our parish group for families. The group is run by the community for the community, so including this year's annual report for the LW&GC Annual Parish Assembly.

Bring Back Guy's Cliffe

Ann Love, Contact

www.facebook.com/Bringbackguyscliffe

On 5th May we are planning an open day in commemoration of 80th Anniversary of VE Day WWII. We are hoping to plant a commemorative Cedar of Lebanon in the grounds, dedicated to the fallen of both world wars, in which Guys Cliffe played a part as a hospital in WWI and a boys school for evacuees in WWII

Also we will be participating in Heritage weekend and would like to make that special as well.

We are aiming to open Guys Cliffe more frequently for community activities.



Cancer Research UK Leek Wootton Branch [NO REPORT]

No report received

Friends of All Saints' Church

Jonathan Kingston, Churchwarden

churchwarden2@leekwoottonchurch.co.uk

At the request of the Parochial Church Council [PCC], the Friends of All Saints' Church was established to preserve and promote the heritage and fabric of All Saints' Church early in 2024. It follows recommended Church of England and the Charity Commission's guidelines. Meeting at The Anchor on Thursday evenings, an appeal document was drafted, finalised and then sent to previous benefactors of the church, who were invited to a successful Cheese and Wine evening on 12 July. The next event in 2024 was a Table Top Sale at the Village Hall, which still went ahead, despite atrocious November weather. So far, the group has raised over £4,000. Activities will be planned for 2025, including a repeat of the Table Top Sale.



Kenilworth Probus I Club

Brian Wilson, Chairman

e: probusleekwootton@gmail.com

www.facebook.com/groups/231317936706970

The Kenilworth Probus I Club is a gathering of retired or semiretired gentlemen from a Professional or Businesses background, residing in Kenilworth or one of the surrounding villages.

Our meetings are held on the third Tuesday of each month from 10:00 until 13:00, at the Leek Wootton Sports Club, to hear talks on a wide range of topics, enjoy good company over a drink at the bar, possibly followed by lunch together at The Anchor Inn in the village.

In addition to our monthly lunches at the Anchor, there are seasonal Sunday lunches in local restaurants and golf clubs, where members (with or without their spouse or partner) can experience some fine dining and take the opportunity for some relaxed and amusing conversation.

Our guest speakers at each meeting, cover a wide range of subjects, from World War 2 heroes to expeditionary treks in the Himalayas – and everything in between.

Occasional visits to places of interest including local factories, cultural sites, experiences etc. are also enjoyed by our members. Over the last 12 months or so, we have visited, the Morgan Car factory, Warwick utility vehicle manufacturers - Dennis Eagle, Coventry Air Museum and the Church Farm Brewery.

Our Christmas interactive quiz is legendary and the annual skittles match, for the Brian Williams Memorial Trophy, against our local Probus 2 rivals provides healthy sporting rivalry supported by a good helping of banter - and perhaps a beer or two.

If you would like to come along and join us, send an email to probusleekwootton@gmail.com, or scan the QR code on the right, which will take you directly to our Facebook page: <https://www.facebook.com/groups/231317936706970>





Leek Wootton & Guy's Cliffe Parish *Community Live!* [NO REPORT]

No report received

e: communitylive@leekwootton.org.uk

[*Community Live!* 2024 will be held on Saturday, 6 September 2025 at Leek Wootton Village Hall]



Leek Wootton & Guy's Cliffe Parish Environment Group [NO REPORT]

Councillor Richard Coates, Contact

e: environment@leekwootton.org.uk

www.facebook.com/groups/LWGCenvironment

Leek Wootton Baby & Toddler Group

Janet Jackson, Contact

e: toddlers@leekwoottonchurch.co.uk

Leek Wootton has benefited from another year of having a parish group that caters for families, babies, toddlers and pre-school aged children. Villagers suggest Leek Wootton Toddlers started around the mid-70's so 2025 could be its 50th Anniversary Year.

Sessions are on Thursday mornings term-time and Janet facilitates and links with the Village Hall committee. The group is small due to fewer families with little ones in the parish, but it continues to be valued by those that turn up and take part.

The group is enabled as former attendees living locally volunteer for tasks required; treasurer, advertising, updating the Facebook page and being available to facilitate if called on by Janet, by opening the Hall, setting up and leading.

With smaller numbers we are depending on our reserves to cover our costs which are the rental of the Village Hall.

Leek Wootton Focus Group

Harry Wilson

www.lwfocusgroup.co.uk

What is the aim of the LWFG?

LWFG is a local residents group established on the 4 February 2022 and comprises more than 525 local residents. We are a grassroots Focus Group committed to promote: Community awareness and scrutiny of the proposed planning application submitted by house developer CALA in March 2022 to build houses on the heritage site of the Woodcote House and Woodland. To establish Woodcote Estate as an officially recognised nature reserve with a Grade II manor house with parkland and lakes. It has an irreplaceable biodiversity, with countless veteran trees, hedgerows and such diverse wildlife which includes otters, bats and badgers. To enable the community to access and enjoy the estate whilst maintaining a natural environment that is healthy and beautiful with a functioning and resilient eco- systems. And finally to increase transparency and scrutiny of any proposed development and PCC management of the Woodcote Estate and village in order to ensure the land is restored, preserved and enjoyed for future generations. The past three years have been enlightening in witnessing how our elected officials and Council officers conduct themselves when we seek answers in line with the 7 Nolan Principles of Public life which are: honesty, integrity, objectivity, accountability, selflessness, openness and leadership.

CALA's Planning Application Ref W/22/1877

2024 saw the conclusion of the Government Inspector's inquiry into CALA's planning application for 83 dwellings on the paddock on the Police HQ. Our numerous concerns for the heritage of the estate, wildlife and woodland were ignored. Woodcote Lane and the Anchor junction were deemed safe. Mr Lee's decision was issued on the 24 May 2024 granting CALA the right to erect 83 dwellings with (all matters of detail reserved except for the vehicular access to the site).

CALA's Planning Application W/24/1006 Further matters

In July 2024 CALA submitted their application for approval of reserved matters for the residential development of 70 dwellings. We have continued to expose the failings within their application and with the support of the community this application appears to have stalled. Nine months have passed without any further developments from CALA and/or the WDC Planners.



Leek Wootton Gardening Club

Jim Barr, Chairman

<https://lwhsociety.cv35.uk>

We have had a year of mixed fortunes. Two well attended events and one event cancelled, at the last minute, due to very bad weather on the day.

The Annual Show returned to the Village Hall. It was well attended and we had a high number of very good exhibits, considering the very erratic growing season which was due to the very cold and wet spring. The weather was kind to us and everyone appeared to be enjoying the Show and various activities.

There was no hanging basket workshop during the past year but the wreath making in December was oversubscribed and we had to add more tables to accommodate the extra participants.

With our healthy bank balance from the previous year, we were able to make a donation to the WI. This was towards the renovation of the Community Garden, on the main road through the village. We have also indicated that we will donate a new two-seater bench in the same reclaimed material as the buddy bench, this is to replace the old wooden bench which is beyond refurbishment.

Unfortunately, the annual social, held to thank annual show helpers, had to be cancelled due to a bad storm, Storm Darragh. The weather was very bad and a tree was felled across the main road, blocking entry from Kenilworth so the committee decide to cancel on the grounds of safety.

We would like to strengthen the committee with a few more members to even out the workload on the remaining team. If anyone is interested in joining the committee please contact the Chairman, Jim Barr, or the Secretary, Steph Jones, for further information.

Future Events Planned for 2025

Annual Show & Fête – Saturday, 16 August - Photographic categories will be 'Front Door Within Three Miles' and 'Blue'.

Social Event – Friday, 5 December - at the Village Hall.

Wreath Making Workshop – Sunday, 6 December 10:00am – 4:00pm - we are proposing the have two sessions as per last year (10:30am -12.30pm & 1:00pm – 3:00pm).

We are also hoping to add further events and to contribute to other parish activities during the coming year.



Leek Wootton History Group

Lesley Eldridge, Secretary/Treasurer

e: historygroup@leekwoottonandguyscliffe.org.uk

Leek Wootton History Group continues to act as a point of reference for those seeking information about the parish and/or its past inhabitants, as well as collecting and sharing archive material. As time allows, the church registers are being transcribed, and an inquiry usually leads to a burst of activity!



LEEK WOOTTON LINK
Parish Magazine

Leek Wootton Link

Lesley Eldridge, Co-Editor

e: link@leekwoottonchurch.co.uk

The local magazine, the LEEK WOOTTON LINK, continues to be applauded by many and generally well subscribed with donations by those who do donate but, despite using it to share Parish Council information, church and charity activity and other news as submitted, it is clear that many in the community do not appreciate the benefit of a quick read to make sure they know what is going on.



Leek Wootton Sports Club

Andy McAvan, Chair

www.leekwoottonsportsclub.com

Highlights

- Successfully implemented new membership structure in April / May last year to include 20% bar discounts for 'Full Members' (basic members and guests now pay higher prices than previously)
- Implemented new IT systems to enable this and better membership tracking
- Took on running the 'Friday Night Fitness' bootcamp style fitness sessions which had previously been financed separately, we now have 15-20 regular attendees, with most weeks having 10-12 people turn up (but we're always keen to introduce new people too)

- Raised £1,300 (including £300 from the Parish Council towards refurbishing the toilets which will take place imminently (although we are still on the lookout for other sources of external funding)
- Formed closer ties with other community groups, most notably the school PTFA who now regularly host meetings at the Club and are planning to run a quiz night soon (and they also donated the school Christmas Tree for onus at the end of term)
- Introduced 'Pie Nights' and Friday night pizzas which have been popular and seen members of the community come and use the Club who we otherwise don't see much of
- Held a fantasy community evening with the handbell ringers and others for what was the highlight of the festive season for so many of our members (and the night where we presented Jim and Nicola Perryman with honorary Life Memberships)
- Other clubs and societies that use the Sports Club (Bridge Club, Probus, Slava Knit etc) are all going strong
- Renamed the pavilion after Tony O'Toole who was instrumental in building the Club into what it is today, but who is sadly currently very ill

Challenges

- Operating costs continue to rise
- Electricity costs in particular have shot up and led to us having to make some difficult cost cutting measures
- This included cancelling our Sky Sports subscription which was popular with members and guests, but at over £4k per year was no longer economically viable for us
- Sadly lost a number of long-term members due to ill health and we will miss them all dearly



Leek Wootton Village Hall Committee

Genny Wilson, Chair

e: genny@klasinski.co.uk

Leek Wootton Village Hall provides a convenient and versatile facility for the use of residents within the Parish of Leek Wootton & Guy's Cliffe, and individuals from the local area. The Hall is used for meetings, parties, community events, horticultural shows, as well as providing a regular venue for playgroups, youth groups, dancing classes, and many more clubs and societies. Regular hirers include parish organisations, charities and groups, for both adults and youngsters.

Leek Wootton Village Hall Ltd. is a limited company charity with trustees who are unpaid directors. The Hall is managed by the Leek Wootton Village Hall Committee. This is made up of the chair, honorary secretary and honorary treasurer; other trustees/directors; the booking secretary; a representative from each of the parish organisations/user groups and elected members who provide particular assistance and valuable ideas. A valuable group of volunteers help with the operational upkeep of the Hall.

We are always looking for local volunteers to help manage and maintain the Village Hall, so if you would like to have a valuable and fun role within the community, then please contact us.

Hire Rates

Main Hall	Parish Organisations / Events	Other Parish Users	Non-Parish Users
Category 1 Monday to Friday 9:00 - 18:00	£8.00 per hour	£15.00 per hour	£18.00 per hour
Category 2 Monday to Thursday 18:00 - 23:00	£8.00 per hour	£15.00 per hour	£25.00 per hour
Category 3 Saturday/Sunday 09:00 – 18:00	By arrangement	£17.00 per hour	£25.00 per hour
Category 4 Saturday/Sunday 18:00 – 23:00	By arrangement	£17.00 per hour	£30.00 per hour
£10 payable for use of the cooker, or £20 for the cooker, dishwasher and heated cabinet			

Committee Room	Parish Users	Non-Parish Users
Maximum 20 Persons	£7.00 per hour	£10.00 per hour

A 30 minute set-up charge and 30 minute clear-up charge is added to ALL bookings for the Main Hall. Hire of the Main Hall includes access to the kitchen, toilets and the storeroom (for the tables and chairs), but not to the first floor Committee Room.

To enquire about availability or to make a booking, please contact the Booking Secretary, Mrs S Fewtrill (t: 01926 409641 (after 4:00pm) / email: lwvh@outlook.com)



Leek Wootton War Memorial Recreation Ground [NO REPORT]
No report received



Leek Wootton Women's Institute [NO REPORT]
Lesley Kirkwood, President



The Leigh Educational Foundation [NO REPORT]

No report received

<https://leigheducationalfoundation.org.uk>



Macmillan Cancer Support Leek Wootton and Kenilworth [NO REPORT]

No report received



Neighbourhood Watch [NO REPORT]

Leek Wootton: NeighbourhoodWatch@leekwoottonandguyscliffe.org.uk

Hill Wootton: sonia@scrimshire.co.uk



Safer Neighbourhoods Team, Warwick Rural West [NO REPORT]

No report received

e: www.snt@warwickshire.police.uk

Young at Heart [NO REPORT]

Jenny Kimberley & Hilary David, Contacts