



The Civil Parish of

Leek Wootton & Guy's Cliffe

ANNUAL PARISH ASSEMBLY 2024

Wednesday, 10 April 2024 at 7:00pm

All Saints' Church, Leek Wootton

Reports 2023/24

CONTENTS

REPORTS FROM THE PARISH COUNCIL	2
Chairman's Report 2023/24	2
Summary of Activity Related to CALA Planning Applications	3
Financial Report for the Year Ended 31 March 2024	4
REPORTS FROM COUNTY & DISTRICT COUNCILLORS	6
Warwickshire County Council: Cubbington & Leek Wootton Division	6
Warwick District Council: Cubbington & Leek Wootton Ward	7
REPORTS FROM PARISH ORGANISATIONS.....	9
1 st Leek Wootton (All Saints') Brownies & Guides [NO REPORT]	9
1 st Leek Wootton (Centenary) Scout Group [NO REPORT]	9
All Saints' Church, Leek Wootton [NO REPORT].....	9
All Saints' Church of England Academy Leek Wootton	9
Bring Back Guy's Cliffe [NO REPORT]	10
Cancer Research UK Leek Wootton Branch	10
Leek Wootton & Guy's Cliffe Parish Community Live! [NO REPORT].....	10
Leek Wootton & Guy's Cliffe Parish Environment Group	10
Leek Wootton & Guy's Cliffe Parish Summer Fête Committee [NO REPORT].....	11
Leek Wootton Focus Group	11
Leek Wootton Gardening Club.....	12
Leek Wootton History Group.....	13
Leek Wootton Link.....	13
Leek Wootton Sports Club [NO REPORT].....	13
Leek Wootton Toddler & Baby Group	14
Leek Wootton Village Hall Ltd.....	14
Leek Wootton War Memorial Recreation Ground [NO REPORT].....	15
Leek Wootton Women's Institute	15
The Leigh Educational Foundation [NO REPORT]	16
Mothers' Union, All Saints' Branch [NO REPORT].....	16
Neighbourhood Watch [NO REPORT].....	16
Safer Neighbourhoods Team, Warwick Rural West	16
Young at Heart	17
PARISH PROFILE	18

REPORTS FROM THE PARISH COUNCIL

Chairman’s Report 2023/24

Councillor Richard Coates

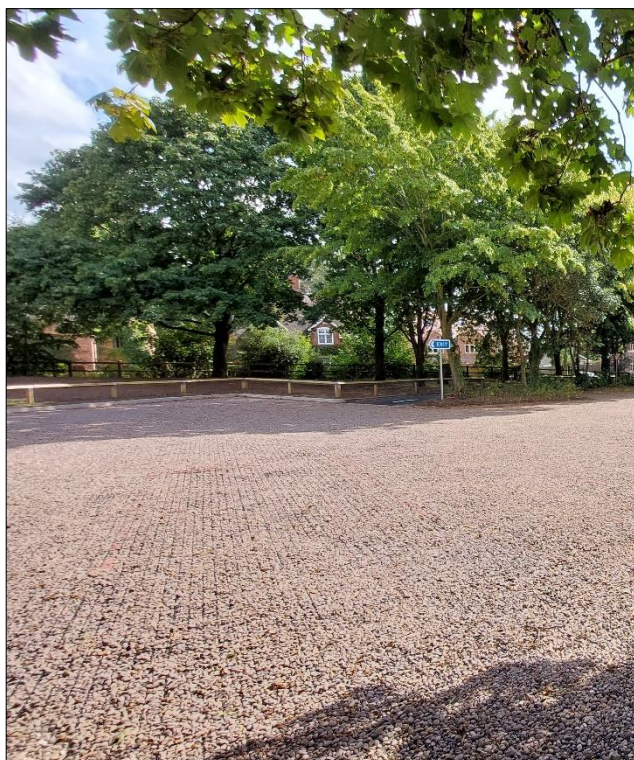
e: CllrCoates@lwandgc-parishcouncil.co.uk

This report was read out at the Annual Parish Assembly on 10 April and does not contain a full account of the CALA housing Appeal process but to date there has been a delay and the Appeal decision has not been published. When it is, our community will be invited to further meetings for discussion and analysis. It has seemed to those of us involved that the CALA housing proposal has dominated front and centre of our parish life over the past year but there has been plenty else going on too.

We began in May last year with the Coronation of the new King Charles III. This was preceded by elections where the previous team of parish councillors were confirmed in place. Later in the year Councillor Steph Allison resigned and in March this year we welcomed Joy Morgan on to our team as her replacement. This means we still have vacancies for two further councillors so if there is any interest in this here tonight, please speak to me or our clerk Helen Eldridge at any time. We are a friendly bunch and are always looking out for like-minded individuals to serve alongside us.

We had a successful Parish Summer Fête in the heat of June and another Community Live! event in September both showing just how much goes on in our community - fundraising, joining clubs and societies and simply having fun. This year both events will be taking place in the Village Hall and Garden.

I’m pleased to report the newly refurbished Rec car park has been a great success with everyone appreciating the better in-and-out driveway, improved lighting, more space and the knee-high fencing protecting the Memorial Stone and the new biodiverse tree and meadow area. There is now a voluntary arrangement in place between the Parish Council, Village Hall, Sports Club and Recreation Ground Trustees to provide funds for ongoing maintenance of the car park.



On the subject of biodiversity and for this year I wish to thank the Parish Environment Group, Teresa Castelino and Eve Fleming for getting things moving. We have some tree planting and seed sowing in hand and in early June there will be a ‘big help out’ weekend when log piles, bug boxes, sparrow terraces and bat boxes will all be put up. This is in response to the biodiversity requirement of the planning permission for the new car park – certainly a worthwhile and sustainable investment on into the future.

The Parish Council's Grant scheme worked well last year contributing to the Environment Group initiative, Leek Wootton Women's Institute Community Garden refurbishment, The Link magazine and the award for our Children's Landscape Artist of the Year.

We are still in negotiation with various bodies over the responsibility for 'orphaned' pieces of land in the village. We have paid for the clearance and re-seeding of the corner of the Hamlet and The Meadows with County Forestry agreeing to plant a new tree. The District Council has rebuilt the steps on Woodcote Lane and has agreed to cut the hedge outside the school and to maintain the footpaths behind the hedges on Woodcote Lane.



Google Streetview

You will be pleased to know that the Parish Council has purchased a speed gun for the Community Speedwatch Group and with police help has identified 4 locations where operations will take place. Speeding drivers will get a letter and for repeat offenders, a police visit. Finally, if you're at all interested in getting involved with any future housing plans for our community, do search the South Warwickshire Local Plan online where you will find we are heading towards the preferred option phase, likely to be published in autumn this year. We as a Parish Council are already engaged with this and as a community, we must all be ready to respond.

In conclusion, may I thank my fellow councillors for their continuing efforts over the past year. We are an apolitical group so there is no-one grinding a party line which is so refreshing these days. We all seek to do the best we can for you and this place we call home. I mention this every year but it loses none of its sincerity when I say how grateful we all are for the brilliant service we get from our clerk Helen Eldridge. She goes above and beyond what is required as a clerk and her whole attitude and demeanour is testament to the values she holds. I don't know what we'd do without her.

Summary of Activity Related to CALA Planning Applications

Cllr Jim Kirkwood

e: CllrKirkwood@lwandgc-parishcouncil.co.uk

Cllr Kirkwood gave a brief summary of the PC's activities related to the potential development at Woodcote (Police HQ) and CALA Homes' planning applications. This report is based on his notes.

CALA have submitted three planning applications:

- W/22/0465 Full planning application for 83 properties. This application is still active and as yet has not gone before WDC Planning Committee nor is there, as yet, any recommendation from WDC Planning Officers.
- W/22/1877 Outline planning application for up to 83 properties. This is subject to an appeal by CALA to The Planning Inspectorate on the grounds of WDC's failure to decide the application in a timely manner.
- W/23/1115 Outline planning application for up to 83 properties. This was refused by WDC Planning Committee.

This appeal was heard by a Planning Inspector at a Public Inquiry, which started in November 2023 and was finally completed in February 2024. WDC gave evidence to the Inquiry, but objected only on very limited grounds relating to possible loss of heritage at the site.

Leek Wootton Focus Group and the Parish Council together formed a Rule 6 Party, which also gave evidence at the Inquiry and objected to the application on grounds of Planning Policy, Heritage, Ecology and Loss of Habitat and Traffic.

To-date the Inspector hearing the appeal has not published his report and this is awaited with interest. There is an unsubstantiated rumour that the report will not be published until June of this year.

Lastly, a very big thank you to everyone in the Parish who supported the Rule 6 party's case and who supported the Rule 6 party at the public hearings.

Financial Report for the Year Ended 31 March 2024

Helen Eldridge, Responsible Financial Officer

e: clerk@leekwootton.org.uk

The Parish Council's gross income in 2023/24 was £96,941 and expenditure £97,441.

The Precept income, which is the core income of the PC, was £21,000 and Precept expenditure was £17,201. The major additional income and expenditure was due to the Leek Wootton War Memorial Recreation Ground Car Park Refurbishment Project.

LEEK WOOTTON WAR MEMORIAL RECREATION GROUND CAR PARK

The car park refurbishment was funded by a Public Works Loan Board loan (£22,861), Warwick District Council's Rural & Urban Capital Improvements Scheme [RUCIS] (£20,000), stakeholder donations (£17,604) and ring-fenced money raised in the Precept since 2020/21. Works were carried out in June and July 2023.

As the nights closed in during the Autumn, the darkness in the north-east corner of the car park, where 8 new spaces had been created, became apparent and, together with the stakeholders [The Recreation Ground Trustees, Leek Wootton Village Hall and Leek Wootton Sports Club] a plan was put in place to provide additional lighting in that location. The stakeholders made donations towards 1x new lamp and updating the existing lamps to LED at a cost of £3,816.

The new car park is designed for 33 cars before the overflow is required, but visible marking of the bays has been a problem. The contractor chose a terracotta-coloured marking, which does not show very well against the gravel, particularly when it is wet. The PC is continuing to consider options to make the spaces clearer and encourage the efficient use of the space.

EVENTS

The Parish Summer Fête was held in June, in extremely hot weather, which affected activities like the tug-of-war and dog events. September saw the return of the Community Live! event. Both events required minimal financial investment totalling £426.

UNEXPECTED EXPENDITURE

Once again, a dominant issue for the Council in 2023/24 has been the outline and detailed planning applications made by CALA Homes Ltd for the paddock and tennis court land at Woodcote (Police HQ). In May 2023 the PC received notification of an Appeal by CALA Homes Ltd due to Warwick District Council's non-determination of its Outline Planning Application for the site within the required time period. The PC has continued to liaise with the Leek Wootton Focus Group [LWFG] and, as neither party had confidence that the District Council would represent the residents' concerns in this matter, agreed to join forces and create a Rule 6 Party, the core funding for which was provided by a fundraising campaign run by LWFG, but the PC has pledged to provide financial support where needed. Although no expenditure was required within the financial year, the PC has been careful with its expenditure to ensure that, when requested, the funds are in place.

This is the second year that this one development site has incurred unexpected financial commitments from the PC, with expert reports to support its objection in 2022/23. With this in mind, the PC has added a budget for Professional Services in its 2024/25 budget.

COMMUNITY GRANT FUND

The Council has in place a Community Grant Fund for organisations to apply to for small grants. During 2023/24 the Council was pleased to award the following: an application was made for a contribution towards the new WI garden; an application was received from local artist, Jan Rawnsley, to provide materials for the first Leek Wootton Landscape Artist of the Year competition in June, and; the regular grant of £300 was made to the *Leek Wootton Link*, which the Council supports to ensure it is delivered to every household in the parish as a key conduit in communication with the community.

OTHER FUNDS

At 31 March 2024 the following funds are open:

- **LWWMRG Car Park Refurbishment:**
The Car Park Refurbishment Fund has been ring-fenced. With the completion of the refurbishment and lighting, this fund will revert to being solely for the repayment of the PWLB Loan. This fund currently holds £592.
- **LWWMRG Car Park Maintenance:**
The Recreation Ground stakeholders have agreed to contribute towards a maintenance fund for future maintenance work. This fund holds £1,000.

- **Biodiversity:**

One of the conditions of the planning permission for the refurbishment of the car park was a requirement for a biodiversity plan, to be commenced within 18 months of the completion of the refurbishment works. As this is not wholly the PC's responsibility, being on Trustees' land, no budget is in place, but a donation has been secured from the Football Club and future funding may be sourced from fundraising and/or grants. Following the purchase of bat boxes and sparrow terraces, this fund holds £830.20.

Other income to the Council was the recovery of VAT, to which the Council is entitled, and at 31 March 2024 there is an outstanding claim to the value of £1,061.

On 31 March 2024, the PC's expenditure over income for 2023/24 is £1,174 and the balance at 31 March 2024 is £9,967, including the Council's reserve funds and outstanding VAT.

REPORTS FROM COUNTY & DISTRICT COUNCILLORS



Warwickshire County Council: Cubbington & Leek Wootton Division

County Councillor Wallace Redford

www.warwickshire.gov.uk

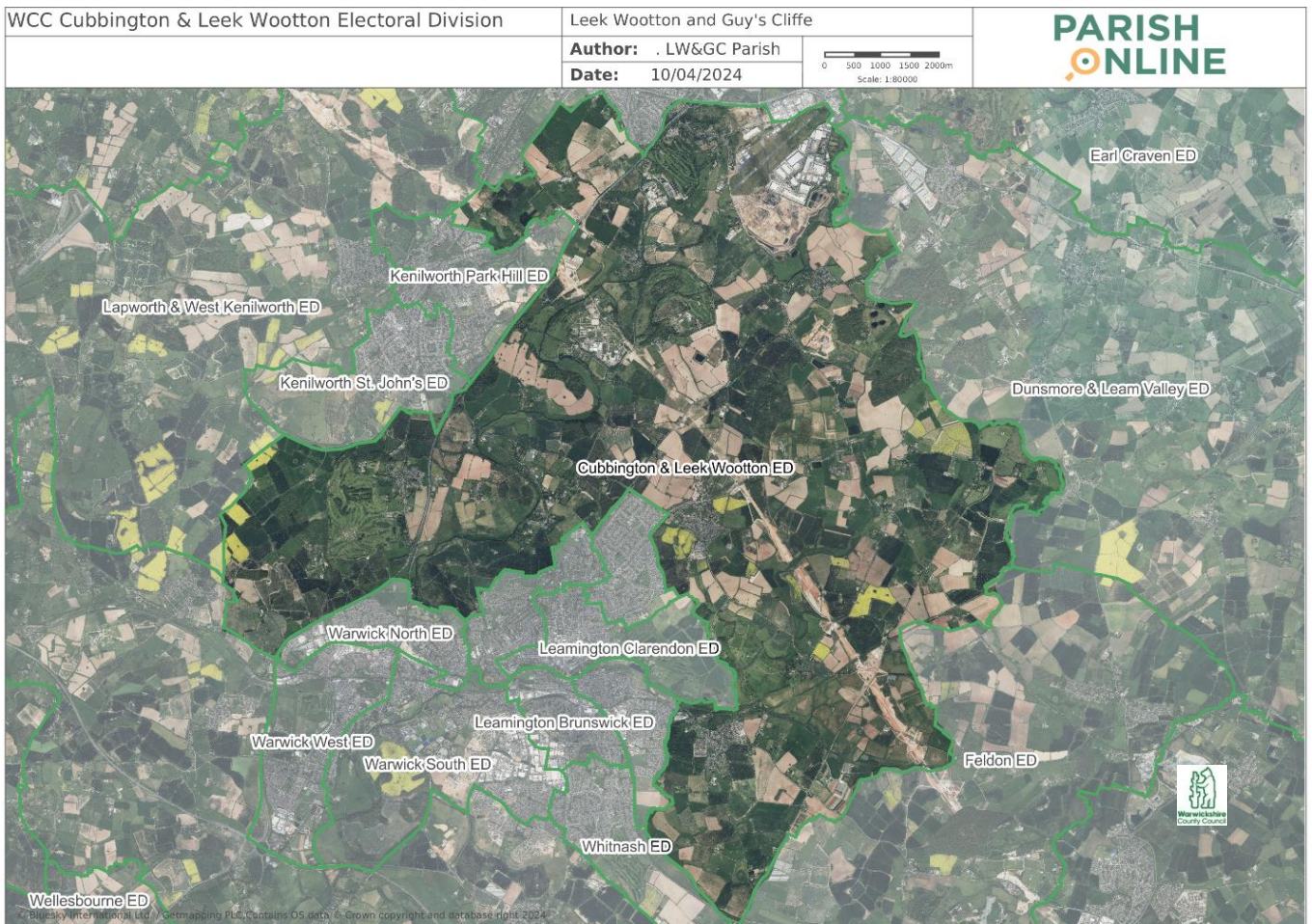
It has been a particularly difficult year having had to cope with rising costs in all aspects of our daily lives. For Warwickshire County Council [WCC] this has shown not just in rising costs of materials, but in their availability as well.

We have also suffered a very wet Autumn/Winter which has resulted in an unprecedented increase in water run-off from the fields. For the first time we have experienced flooding of properties which had never been considered at risk of flooding, drainage courses, etc. being checked and appropriate action being taken to ensure excess water is carried away. Grips are regularly dug out and a programme of road side white lining has been taking place where there are no kerbs to indicate the road edge. Damage to our rural roads and lanes by HGVs is a continuous problem, with repairs being hampered by the lack of infilling material. HGV traffic also adds to our pothole problems. Highways carry out repairs as quickly as possible, but it is a never-ending problem. Trials are being carried out using different materials to improve the pot hole repair performance.

Road and pedestrian safety is always given priority, the speed of vehicles is always an issue and where requested traffic data cables are being used to ensure up to date traffic data is being collated and analysed for any road safety action needed.

New road signage has been erected in many places this year and will be an ongoing programme of replacement.

Keep Safe.





Warwick District Council: Cubbington & Leek Wootton Ward

District Councillors Pamela Redford and Josh Payne www.warwick-dc.gov.uk

The past year has brought some important changes in the Warwick District Council [WDC] administration. At the last District Council Elections in May 2023, the administration of the WDC changed, from a Conservative leadership to a Joint Green/Labour alliance. The new administrations will be focused on new 'Green' policies. WDC assets such as WDC cars are electric, and all WDC owned building will be Net Zero by 2025.

Warwick District Council has not increased its portion of the Council Tax bill for the past two years; however, this year, as I am sure you have all noticed, we see it increase by 2.99%. This is equal to a £5.29 increase per household per year, or 11p per household per week, on a band D household. Warwickshire County Council, and the Police Precept has also risen.

At the February District Council Meeting Councillors approved a range of financial support measures, which will help to fund investments into services and deliver on the long term aims of its new corporate strategy.

The quest to tackle homelessness and rough sleeping in the district has received a boost, with the announcement that WDC has secured central government funding, to help support a number of local schemes. £35,064 has been awarded through the "Move-on and Prevention Fund", in recognition of the number of people who are currently found sleeping on the streets. This funding will allow the Council to extend a number of projects, in conjunction with multi-agency partners.

Further funding has come through from Central Government for those on low incomes and those receiving benefit, to assist with utility bills.

WDC is one of six local authorities that have successfully contracted Coventry City Council to mobilise and deliver a new business energy advice programme in the county, funded by the UK Shared Prosperity Fund. The Warwickshire Business Energy Advice Service will promote energy efficiency, supporting the creation of a green, growing and sustainable economy across Warwickshire, it is part of the £4.6million Business Growth Programme commissioned in 2023.

WDC has approved funding to upgrade the paddling pool in Victoria Park, and it is hoped that St Nicholas Park's paddling pool will remain open this summer, subject to remedial works and safety checks.

The Council will continue its trial of measures this spring and summer, to aid the recovery of endangered bird populations on St Marys Land, Warwick. This follows positive results from previous trials, which has seen a rise in numbers of ground nesting birds, such as Skylarks, returning to the fields each year.

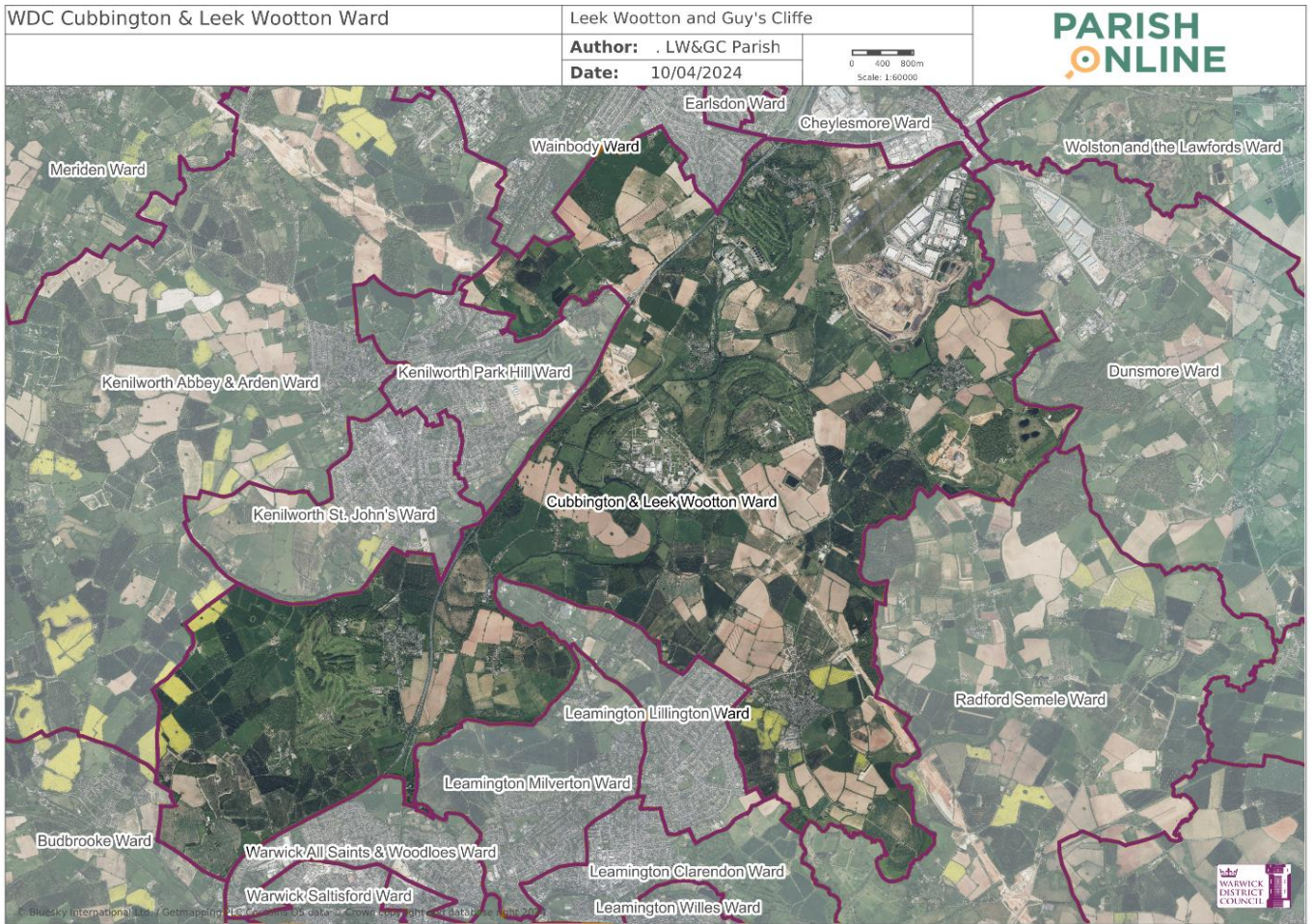
The South Warwickshire Local Plan review is ongoing, this is always a very long and slow process. The plan will likely go to Public Consultation (Regulation 19) between October- December 2025, and the Submission to the Secretary of State (Regulation 22) in 2026.

No Mow May will once again be carried out across the district, except where there has been a decision to cut, such as roundabouts and verges at junctions. The Cubbington & Leek Wootton Ward will be one of the exceptions, as there are many areas where the verges are used for pedestrian footways, it would therefore be dangerous to leave them with long grass, which would encourage pedestrians to walk in the roadway.

Lastly, but most definitely not least, as a signed-up member of the Armed Forces Covenant, and 2024 being a particularly important year for our Armed Forces, being the 80th Anniversary of the D-Day landings and the 110th Anniversary of the start of WWI, Warwick District Council will be lighting a Beacon at Beacon Hill, Newbold Comyn, at 9.15pm on the evening of 6 June, to Commemorate this very important day in our Country's history. On Saturday, 29 June, there will be an Armed Forces Day at St Nicholas Park, to recognise those men and women, who give so much for the security of our Country, and to those veterans who did so in the past. I sincerely hope that you will join with WDC in these events, as a thank you to our Armed Forces of today, and our veterans of the past.

As your District Councillor you can be assured, I will continue to work on your behalf.

D/Cllr Pam Redford



 REPORTS FROM PARISH ORGANISATIONS

**1st Leek Wootton (All Saints') Brownies & Guides [NO REPORT]**

No report received

www.facebook.com/LWbrowniesguides

**1st Leek Wootton (Centenary) Scout Group [NO REPORT]**

No report received

www.leekwoottonscoutgroup.co.uk

**All Saints' Church, Leek Wootton [NO REPORT]**

No report received

<https://leekwoottonchurch.co.uk>

**All Saints' Church of England Academy Leek Wootton**

Andrew Morris, Head Teacher

www.allsaints-leekwootton.covmat.org

All Saints' CofE Academy continues to be a special place within the community that encourages the children to enjoy life in all its fullness.

We continue to aim for high quality education rooted in a Christian foundation ensuring the children not only have a clear academic focus, but a clear focus on a personal and social education programme. Our AGC (academy governance committee) continue to have a clear overview of the strategic vision for the academy and offer that perfect balance of support and challenge.

We continue to be grateful for the support that the local church and Jim continue to give the school. Their genuine care for all of the children is evident and Jim's commitment to leading collective worships is appreciated.

The children do value this important link and the importance of their church community in their lives.

The school continues to have Forest School as a key part of what we offer the children within school. Each class has an opportunity to develop their love of the outdoors and their creativity within this area. It is something that the children thoroughly enjoy at all ages. I have been particularly impressed with the children's creativity as they get an opportunity to be part of nature.

We have been enjoying opportunities to bring learning alive with the children. This has included dance workshops focusing on *Charlie and the Chocolate Factory* and Diwali with a traditional workshop on English dancing planned in the summer term. We have also enjoyed school trips linked to our Rainforest theme and a Polar experience day.

Our Christmas performance was once again enjoyed with the youngest children (KS1 and reception class) within our school taking the leading parts.

We continue to focus in school on developing our curriculum to ensure the children not only know all of the key requirements, but get to learn them in an enjoyable and fun context. We have enhanced many of the areas we study (such as history and geography) to ensure the children develop skills that are of the highest level and make them ready to be the next set of historians or geographers.

Our Easter performance is planned to go ahead once again in All Saints' Church. The Easter performance is always such a moving service with Waller children once again leading this production. Rehearsals are looking really good and I can't wait to see the final performance.

To conclude we continue to be a school that is rooted in the community and aims to offer children opportunities to 'Live Life in all its fullness' and to enjoy a wide diverse of experiences set within the Christian foundation, that it is rooted upon.

Bring Back Guy's Cliffe [NO REPORT]

No report received

www.facebook.com/Bringbackguyscliffe**Cancer Research UK Leek Wootton Branch**

Lesley Holiday

The group has had another successful year of fundraising within the village.

In April *Jean and Jim's Big Breakfast* welcomed almost 200 guests over the course of a sunny morning at the Village Hall and raised about £2,300. Many thanks to Jean Singleton for hosting this event.

In October about 70 people attended a Black Country evening at the Village Hall. We were entertained by husband-and-wife duo - Dandy, and were served delicious pies, mash and peas. A bar and mystery tombola ensured a very enjoyable evening and £1,256 was raised.

In March this year we held our ever popular, and competitive! Skittles evening at the Sports Club, including a fish and chip supper for 50 people. Geoff Holiday and some hardworking 'putter-uppers' ensured the smooth running of a fun event and £601 was raised.

Our supporters include the Sports Club raising over £300 from some excellent quiz nights, the Warwickshire raising £261 from the ladies Aquafit class and donating raffle prizes, The Anchor pub, Professional Beauty and Majestic wine for their donations of raffle prizes. To all our loyal supporters and for generous In Memoriam donations we would like to say a big thank you for supporting CRUK's important work.

A total of over £5,200 was sent to CRUK this past year, from Leek Wootton.

Leek Wootton & Guy's Cliffe Parish Community Live! [NO REPORT]

No report received

e: communitylive@leekwootton.org.uk

[Community Live! 2024 will be held on Saturday, 7 September at Leek Wootton Village Hall]

**Leek Wootton & Guy's Cliffe Parish Environment Group**

Councillor David Elsy, Contact

e: environment@leekwootton.org.ukwww.facebook.com/groups/LWGCenvironment

This parish group includes Parish Councillors as well as interested members of the community and has been active for just over a year now.

Our Mission statement is "A greener village for all" and its primary goal is to bring people in the village closer to nature and to promote biodiversity and wildlife.

Our objectives include monitoring and supporting wildlife, education and encouraging community participation.

To help achieve these objectives, the following activities have been carried out in the last year:

- The surveying of 28 notable trees in the parish and adding 8 new trees to the Woodland Trust's Ancient Tree Inventory.
- Writing regular features in *The Link* magazine about local wildlife.
- Asking the community for information on their sightings, including the *Big Butterfly Count* in July/August, *Big Garden Birdwatch* in January and toad patrolling in February/March.
- The group's Facebook page has 45 members, sharing what we see around the Parish. This year it has included, for example, the first ever sighting of a Cattle Egret in the Warwick area.
- Members of our group have been helping out at the new Avon Wood with species identification, simple management tasks and the planning of an Open Day.
- The group is actively involved in the planning and management of the new recreation ground car park biodiversity area.
- The group took part in *Community Live!* and *Cherishing Churchyards* events.
- A meeting took place, in June, with the General Manager of The Warwickshire golf course to discuss the development of a large flower-rich meadow on the large grassy area, north of the main entrance drive. It was not considered suitable by the Manager, but other areas were discussed.

Leek Wootton & Guy's Cliffe Parish Summer Fête Committee [NO REPORT]

No report received

e: summerfete@leekwootton.org.uk

[The Parish Summer Fête will be held on Saturday, 15 June 2024 at Leek Wootton Village Hall]

Leek Wootton Focus Group

Harry Wilson, Contact

www.lwfocusgroup.co.uk**Harry Wilson spoke at the Annual Parish Assembly 2024 and this report is based on his notes.**

I would like to thank all members of the Parish Council for their help and financial support and you the members of our community who have encouraged and aided this campaign.

Last year the Focus Group [LWFG] and the Parish Council joined forces to be a Rule 6 Party at the Planning Inquiry for the CALA Appeal [W/22/1877].

In 2023 we attended three Warwick District Council Planning Committee hearings:

- 20 June 2023 W/22/1877 (Outline planning for up to 83 dwellings)
- 12 September 2023 W/22/1877 (Wheatcroft amendments)
- 11 October 2023 W/23/1115 (Outline planning for up to 83 dwellings)

In September there was a "secret meeting" between WDC Planning Officers and members of the WDC Planning Committee (there is no public record). This was to put pressure on the Planning Committee members to basically toe-the-line. I would like to thank the Planning Committee for their resolve and attention to detail. They have given external validation to our arguments made over the last 18 months, and have unanimously rejected all three applications.

The Planning Inquiry, chaired by Stephen Lee, commenced on 31 October and finished on the 30 January. Representations to the Inspector were made by:

- District/Cllr Lowell Williams assisted by the Council's barrister Jack Smythe
- District/Cllr Josh Payne our newly-elected Councillor for Cubbington & Leek Wootton Ward
- and, representing the Rule 6 Party, Reiss Sadler (Marrons' Planning Expert), Simon Stanion a Partner of Shakespeare Martineau and, of course, me

Closing speeches were made by Killian Garvey for (CALA), Jack Smythe on behalf of WDC and Simon Stanion for the Rule 6 Party (I would urge you to read his closing statement).

We were informed by the Inspector, Stephen Lee, that a decision would be made by late February. However, this now appears to be extended to June. WHY?

AT THE INQUIRY

106 Agreements were proposed totalling £1.6m, none of this is being spent in our parish.

FUNDING

Since June 2023, and in 6 months, with your help and generous donations from anonymous members within our community we raised over £50,000 to pay Marrons Planning fees of £16k and Shakespeare Martineau's fees of £34k

- Go Fund Me (TODAY) £ 11,897. This will be closed down at the end of April.
- Direct personal donations £1,750
- Anonymous donations over £30,000
- Parish Council £6,000

Should you require a copy of our accounts this is readily available.

QUESTIONS AND ANSWERS

We have numerous items of unanswered correspondence:

- Site clearance & the digging of trial holes Aug 2022
- Tree report - internal investigation / complaint now with the Ombudsman - our last letter was 1 April
- WDC Arboriculture Officer - providing misinformation
- WCC Highways issues - our last letter was on the 23 February
- Badger sett disclosure - internal investigation request
- Posting on the Planning Portal – i.e. Woodland Trust objection letter 5 August 2022
- Numerous Planning breaches on the Woodcote estate

- Seeking answers from the Police & Crime Commissioner [PCC] - our report *Who Polices the Police?* The question remains unanswered - was issued on the 8 March 2024

95% of the questions remain unanswered.

The PCC has for two decades embarked on a strategy of selling off the estate costing the tax payer £1-2m:

- 2007 to 2010 - glass office block
- 2011 - proposed retirement home development
- 2012 - (we discovered last month by accident) the PCC instructed Lambert Smith Hampton to place all 61 acres on the market. (I have spoken to the surveyor concerned to verify this)
- 2016 to April 2018 the whole estate offered for sale by GVA
- 2018-21 Sale to CALA - 4.5 acres of land without any conditions

SUMMARY: WHAT HAVE WE ACHIEVED IN 2 YEARS?

- Highlighted and recorded the dangers of The Anchor junction, Woodcote Lane and Woodcote Drive.
- Recorded over a dozen veteran trees to the Woodland Trust Ancient Tree Inventory with the help of LW&GC Parish Environment Group.
- Compiled a comprehensive database of wildlife: otters, barn owls, 5 types of bats, lesser spotted woodpeckers, sparrow hawks, herons and red kites, all recorded through the dedication of David Morley and Jim Maynard.
- Shone a spotlight onto the importance of the Woodcote estate - tips are being cleared, pollution addressed.
- Woodland around the lake has been cleared - questions have been asked. WHY?
- CALA's planning application has been delayed for over 2 years.
- In March 2024 it was widely reported that Legal & General is considering selling CALA.
- We have the ear of the WDC Planning Committee and wildlife groups.
- Exposed the lack of investment on the estate, the systematic abuse of trees, buildings and wildlife
- North Lodge has been saved - planning was approved in May 2023 for the external repair works - 12 months later judge for yourself what has been done
- The Bell tower that was in danger of collapse has finally been replaced.
- Above all we are insisting on accountability and transparency.

We remain a grassroots Focus Group committed to promoting:

- Community awareness and scrutiny of proposed planning applications.
- The establishment of the Woodcote estate as an officially recognised nature reserve with a Grade II manor house, parkland and lakes.
- Community access and enjoyment of the estate whilst maintaining a natural environment that is healthy and beautiful with a functioning and resilient eco- system.
- Restoration and preservation of the land for the enjoyment of future generations.

Surely that is worth the fight.

Finally one of the unsung heroes of this campaign is Julie Midgley. Her guidance, eloquence with words and moral support has kept me and this campaign afloat. Thank you, Julie.

And thank you all for attending yet another meeting.



Leek Wootton Gardening Club

Jim Barr, Chairman

<https://lwhsociety.cv35.uk>

As a society, this year has involved a number of changes. We have been able to rebrand to our present name *Leek Wootton Gardening Club* and enjoyed a number of our regular and new events. Success has continued following a hanging basket demonstration and participants making their own personal creations in May. The wreath making workshop was also a 'winner' in December. Both events were very well supported. Such future activities as these should be continued to keep people attracted to the Gardening Club.

The 2023 Summer Show was held at the village school. It was very well attended with a high number of exhibits and even past villagers travelled to attend the favourite community event and enjoy the good weather. The 'social event' in December was held as usual in the Village Hall and gave the club members an opportunity to thank all the supporters and helpers of the 'Show' with an amazing buffet and refreshments.

Our past Chairman, Brian Melling, has been elected as President and we thank him for all his hard work over his many years on the committee. Wendy McGowan has now settled well into her role as Treasurer. We would like to thank Christine Hurcomb (past Treasurer), Angela Guest (Show Secretary), Ron Guest and Rob Jones for their valued contribution over many years, but have now resigned from the committee. Sadly, Tom Powell passed away this summer, and Margaret Powell's poor health is of concern - we wish her well.

We would like to strengthen the committee with a few more members to even the workload on the remaining team. If anyone is interested in joining the committee please contact the Chairman, Jim Barr, or the Secretary, Steph Jones, for further information.

Future Events Planned for 2024

- Annual Show – Saturday, 17 August - Photographic categories will be 'Daily Life in Leek Wootton' and 'Wildlife in your garden'.
- Wreath Making Workshop - Sunday, 1 December 10-4pm - we are proposing the have two sessions as per last year (10:30am - 12:30pm & 1pm - 3pm).
- Social Event – Saturday, 7 December - at the Village Hall.

We are also hoping to add further events and to contribute to other parish activities during the coming year.



Leek Wootton History Group

Lesley Eldridge, Secretary/Treasurer

e: historygroup@leekwoottonandguyscliffe.org.uk

The History Group continues to respond to a diverse range of enquiries about the parish and the people who were here before us. Occasionally, it has been possible to liaise between a person with some answers and the enquirer. The Group has submitted material to *The Link* and is always willing to delve into its archive if there is a story and/or an image that might assist others.

Sadly, in December 2023 the Group learnt of the death of Jane Pain. It was Jane's belief in the need to update a history of the parish prepared by The Reverend Charles Nettleship in 1977, which in its turn had been a revision of notes compiled by The Reverend Sydney Longland in 1935, that led to the Millennium project of *Leek Wootton and its Hamlets*, eventually published in 2021.

The disparate group of residents who came together to research and write up the various chapters enjoyed the project and learnt so much. It is thanks to Jane and what became the Leek Wootton History Group, that we have been able to continue to share the results of that research and have gone on to involvement in other parish history projects.

The Group will continue in its efforts to respond to enquiries and to share its knowledge of the history of the parish.



Leek Wootton Link

Lesley Eldridge, Co-Editor

e: link@leekwoottonchurch.co.uk

The Link is, by one method or another, circulated to every household within the Ecclesiastical and Civil parishes, which means that every resident may be informed of what is happening within the community, and of other news.

The Editors are entirely dependent upon the material submitted to them for the content each month, and then to a 'team' of voluntary distributors to ensure that nearly 90% of the magazines reach doorsteps. Without those volunteers all would be lost. Copies of the magazine are posted to the more outlying properties in the parish.

Unfortunately, costs have increased significantly over the years, but thanks to the advertisers and generous donations from many readers, we believe that we can continue to provide the quality of magazine that we have been producing. The GiftAid that many donors now commit to has bolstered our income and we thank all those good enough to donate.

We hope that the quality of the product and information provided will encourage even more of our readers to donate.



Leek Wootton Sports Club [NO REPORT]

No report received

www.facebook.com/LeekWoottonSportsClub

Leek Wootton Toddler & Baby Group

Janet Jackson, Contact

e: toddlers@leekwoottonchurch.co.uk

Leek Wootton has benefited from another year of having a village group that caters for families, babies, toddlers and pre-school aged children.

The group has been small due to fewer families in the village able to join in but it continues to be valuable. Families turn up and take part and if needed facilitate; open up, set up and provide refreshments so families of the community know there are regular sessions.

The group exists because we also continue to have two former attendees undertaking the tasks of treasurer and advertising regularly through publications, the school and village church.

We have some volunteers in the community who will facilitate a session if called on and Janet who usually attends, works to keep sessions running by asking for support if needed and also links with the Village Hall Committee.



Leek Wootton Village Hall Ltd

Genny Wilson, Chairman

e: lwvh@outlook.com

Leek Wootton Village Hall provides a convenient and versatile facility for the use of residents within the Parish of Leek Wootton & Guy's Cliffe, and individuals from the local area. The Hall is used for meetings, parties, community events, horticultural shows, as well as providing a regular venue for playgroups, youth groups, dancing classes, and many more clubs and societies. Regular hirers include parish organisations, charities and groups, for both adults and youngsters.

The Village Hall was closed during the summer of 2023 whilst the car park was redeveloped and resurfaced. Leek Wootton Village Hall Ltd. is a limited company charity with trustees who are unpaid directors. The Hall is managed by the Leek Wootton Village Hall Committee. This is made up of the chair, honorary secretary and honorary treasurer; other trustees/directors; the booking secretary; a representative from each of the parish organisations/user groups and elected members who provide particular assistance and valuable ideas. A valuable group of volunteers help with the operational upkeep of the Hall.

We are always looking for local volunteers to help manage and maintain the Village Hall, so if you would like to have a valuable and fun role within the community, then please contact us.

HIRES RATES

Main Hall	Parish Organisations / Events	Other Parish Users	Non-Parish Users
Category 1 Monday to Friday 9:00am -6:00pm	£8.00 per hour	£13.00 per hour	£18.00 per hour
Category 2 Monday to Thursday 6:00pm -11:00pm	£8.00 per hour	£14.00 per hour	£18.00 per hour
Category 3 Friday 6:00pm -11:00pm Saturday/Sunday	By arrangement	£16.00 per hour	£22.00 per hour

£10 payable for use of the cooker, or £15 for the cooker, dishwasher and heated cabinet

Committee Room	Parish Users	Non-Parish Users
Maximum 20 Persons	£7.00 per hour	£9.00 per hour

A 30-minute set-up charge and 30-minute clear-up charge is added to ALL bookings for the Main Hall.

Hire of the Main Hall includes access to the kitchen, toilets and the storeroom (for the tables and chairs), but not to the first floor Committee Room.

To enquire about availability or to make a booking, please contact the Booking Secretary, Mrs S Fewtrill.

t: 01926 409641 (after 4:00pm) / e: lwvh@outlook.com



Leek Wootton War Memorial Recreation Ground [NO REPORT]

No report received



Leek Wootton Women's Institute

Lesley Kirkwood, President

Leek Wootton continues to thrive as an energetic, friendly group of 50 members. We are also fortunate to have an enthusiastic committee of 12 who have worked hard to make it a success.

This year our programme included;

A photographic tour of the wildlife and beautiful scenery of the islands off the west coast of Scotland from Nick Martin.

Anne Burell had us all on our feet for an evening of circle dancing in February. In March Helen Barlow told us about the work of the Dogs' Trust.

Dr Gillian White was a lively and informative speaker who told us all about the Great Fire of Warwick in 1694. At the April meeting Sally Ellis, a local resident of Leek Wootton, gave us a fascinating talk about her work for the Warwickshire Hedgehog Rescue. She was able to tell us about her work and a little bit more about their lifestyle, eating habits etc.

In June another Leek Wootton resident, Brian Wilson, told us about Jonny Ramensky, known as "Gentle Johnny". Described as a "Thief and a Hero". A career criminal who turned his skills to safe-cracking as a commando during World War 2.

In September we had a meditative evening of Tai Chi with Julia Mitchell as well as telling us about her change of career from IT to Tai Chi.

In addition to our regular meetings, we have a newly formed popular cinema group which has enjoyed a wide variety of films from *Whitney Houston* to *Allelujah*. For the theatre lovers there have been several trips including "*Our House – the madness musical*" at the Spa Centre, *Pride and Prejudice* supporting our local Talisman theatre, *The Book Thief* at the Belgrade and *Hamnet* at the Royal Shakespeare company in Stratford.

Eating out is always very popular! including a Vietnamese meal at Yum Yum in Warwick, Ego in Kenilworth and The Anchor, supporting our local pub in Leek Wootton.

We have also visited several beautiful gardens over the summer as part of the Warwickshire Open Garden scheme. Our latest trip, was to Cedar House in the grounds of a former vicarage in Wasperton.

We had our "Christmas meal" at Harringtons-on-the-Hill in Kenilworth in January.

Our annual summer outing this year was to Hampton Court in Richmond on a very hot day in June. We had a fascinating tour with a very professional knowledgeable guide who explained the history of this beautiful building and we then had time to explore the garden and maze.

Our Summer meeting in the Village Hall in July was enjoyed by everyone. Our "Afternoon Tea" was delicious – scones, sandwiches and a glass of bubbles!

Our members provided the refreshments as always, including lovely homemade cakes, at the Parish Fête in June. All the proceeds from refreshments and jar stall going towards the WI Garden.

A Gin Tasting experience was enjoyed one evening in August. The Warwickshire Gin Company explained the gin making process to us, and then, tasting several varieties of gin, rum and vodka. We are now exploring the possibility of a future cocktail tasting experience.

The walking group continues to try and discover different parts of the Warwickshire countryside including the now obligatory coffee and cake afterwards. Our now, annual walk around Baddesley Clinton is always popular followed by a meal at the Tom O' The Wood in Rowington.

Reading Group meets monthly. Always a lively discussion about the book we've been reading. Often a book that we would not necessarily have picked off the shelf ourselves. Thrillers always being a popular choice.

Finally, it's been a busy year in The WI Garden. We were successful in our application for a grant from Warwickshire County Council and were awarded £1,500 to develop and improve the rather sad looking WI Garden in the centre of the village. The parish council also generously donated £600. The charity, "Rapid Relief Team" generously bought a "buddy" bench. The garden has already been transformed. The landscaping work is now almost complete and the plants are ready to go in. The Brownies and village school children will also be involved decorating tiles, planting bulbs and making insect houses. So, a real community effort.

We can all look forward to another successful and enjoyable year at Leek Wootton WI.



The Leigh Educational Foundation [NO REPORT]

No report received

<https://leigheducationalfoundation.org.uk>



Mothers' Union, All Saints' Branch [NO REPORT]

No report received

e: mu@leekwoottonchurch.co.uk



Neighbourhood Watch [NO REPORT]

Leek Wootton: NeighbourhoodWatch@leekwoottonandguyscliffe.org.uk

Hill Wootton: sonia@scrimshire.co.uk



Safer Neighbourhoods Team, Warwick Rural West

PS 1533 Johnathan Calvert, Contact

e: www.snt@warwickshire.police.uk

Chief Inspector 686 Faz Chisty: oversees local policing in South Warwickshire and responsible for the response teams, safer neighbourhood teams & investigation teams covering Warwick District.
Inspector 1077 Jem Mountford: oversees all the 8 safer neighbourhood teams in Warwick District.
Sergeant 1533 Johnathan Calvert: oversees 4 safer neighbourhood teams: Warwick Central, Warwick Rural East, Warwick Rural West and Kenilworth. No specific officers for Warwick Rural West due to abstractions and PCSO Power joining Warwickshire as an officer, but other officers will cover as much as possible until replacements are sourced.

Leek Wootton & Guy's Cliffe Parish

The Parish is a low crime area and the data provided below is taken from our investigations data. Data for Leek Wootton and Guy's Cliffe extracted separately, because system groups the parish with Shrewley, Hockley Heath, Rowington, Lapworth and surrounding villages.

Total recorded crime for the area is down 11% on the same period form last year (data for 01/04/23 to 01/04/24), so it stands to reason crime in Leek Wotton & Guy's Cliffe will be down a comparable amount.

Below are the key SNT areas we measure, with the number after each descriptor the total recorded investigations on our systems.

- Anti-Social Behaviour – 13 (This varies widely from personal ASB (nuisance youths for example) to environmental ASB (noise, nuisance driving for example).
- Burglary Dwelling -3
- Burglary Commercial – 1
- Bike theft -1
- Violence without harm – 10 (Generally domestic violence or violence associated with local public houses)
- Violence with harm – 6 (Generally domestic violence or violence associated with local public houses)
- Robbery – 0
- Theft of motor vehicles – 5
- Theft from motor vehicles – 16 (the majority being located at the Chesford Grange Hotel).
- Vehicle Interference – 3

I note that poor parking is an issue in the area. Unfortunately, we cannot get out to each and every report of bad parking. If there is a persistent parking issue then I would advise going to the Warwickshire Police web page and submitting an online report, which will come through to us. Also, a photograph of the offending vehicle is useful, and residents are more than welcome to submit photos to Warwick Rural West email: www.snt@warwickshire.police.uk.

The Warwick / Kenilworth SNT is currently targeting ASB, knife crime and county lines drug crime. We have completed a number of operations over the past three months in an attempt to disrupt the aforementioned, with satisfactory results.

Warwickshire Connected

Warwickshire Connected is a free messaging service brought to you by Warwickshire Police where you decide when and how you hear about the issues that matter most to you, whether that be getting regular crime updates, the latest information on ongoing incidents and emergencies or learning more about what your local police are doing.

This is also the place where you can get involved in helping to make your local area a safer place, tell us what police should be doing in your area, shape the initiatives that help to keep people and property safe and tell us what matters are causing your communities harm.

<https://www.warwickshireconnected.com>

Warwickshire Road Safety Partnership

The joint approach from Warwickshire Police and Warwickshire County Council is for members of the public (including councillors and key community representatives) to submit their concerns via the Warwickshire Road Safety Partnership website <https://warksroadsafety.org/safe-speeds>. This is the central reporting method for speed concerns within Warwickshire, which enables a consistent and data-led approach.

Young at Heart

Jenny Kimberley & Hilary David, Contacts

Jenny Kimberley and Hilary David started the Young at Heart group 25 years ago at the Sports Club. We are pleased to say we are still meeting, with 16 members. We meet at 2-4 pm every Monday, except Bank Holidays.

We enjoy gathering with a lot of laughter and fun. Quizzes, bingo, scrabble are amongst the activities, and we like to go out for meals and visit garden centres.

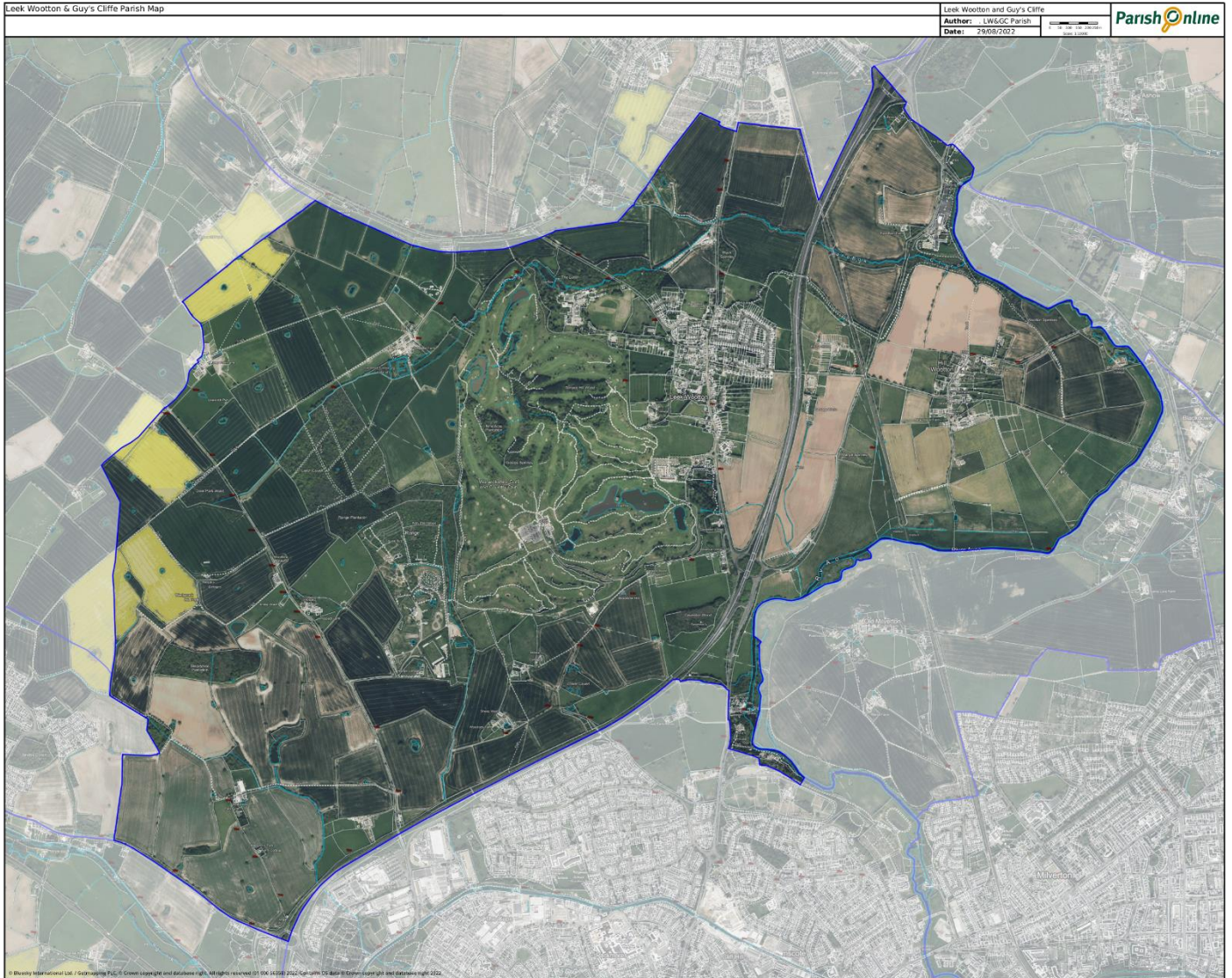
The highlight of the afternoon is the time when we break for cakes, some of the delicious ones made by members and a hot cup of coffee or tea.

Jenny Kimberley (t: 01926 857404)

Hilary David (t: 01926 258576)

PARISH PROFILE

Map: Leek Wootton & Guy's Cliffe Civil Parish



Office for National Statistics: Census 2021 Data

www.ons.gov.uk/census



Rounded to the nearest 10 people and households