



My Ref: SMI /0411

**Communities Group**

County Highways  
Old Budbrooke Road  
Warwick  
CV35 7DP  
Tel: 01926 412515  
Fax: 01926 738917

Email: [chsouth@warwickshire.gov.uk](mailto:chsouth@warwickshire.gov.uk)

[www.warwickshire.gov.uk](http://www.warwickshire.gov.uk)

The Occupier  
**Woodcote Lane,  
Leek Wootton.**

29th July 2016

Dear Sir /Madam

**C24 Woodcote Lane, Leek Wootton - Carriageway Resurfacing Works (Phase 1)**

Resurfacing work is due to commence on Monday 15<sup>th</sup> August 2016 and will take 5 days. The site extends from the junction of Warwick Road for a distance of 411m to a point northwest of the junction with Waller Close.

This work will be carried out under a road closure. Access to properties within the works will be maintained from one end of the road or the other where practical. A diversion route will be signed.

**Monday 15<sup>th</sup> Aug.** Planing of carriageway.

**Tuesday 16<sup>th</sup> Aug.** Renew and adjust ironwork.

**Wednesday 17<sup>th</sup> Aug – Thursdays 18<sup>th</sup> Aug.** Lay new surface course.

**Friday 19<sup>th</sup> August.** Finishing works & road markings.

Please drive slowly through works.

Please be aware of temporary road surfaces and raised ironwork.

There will inevitably be some disruption to residents and businesses, but every effort will be made to keep this to a minimum.

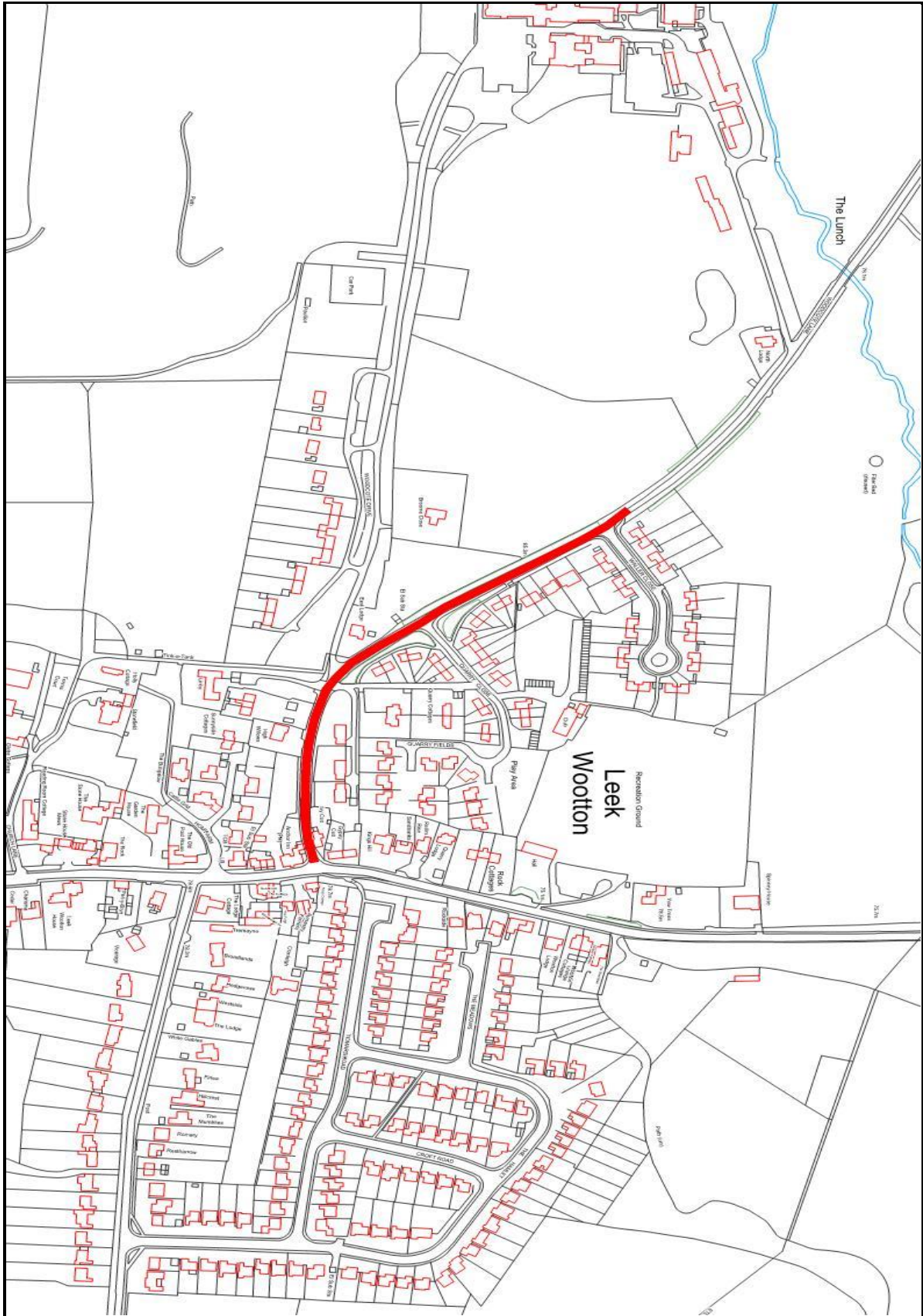
If you require any further information or wish to discuss the works please contact me.

See attached drawing on reverse of this letter for site extents (red line).

Yours sincerely

Peter Garrison,  
Planned Works Delivery Engineer

*Working for  
Warwickshire*



**Note: C24 Woodcote Lane carriageway resurfacing works phase 2 is planned for 26<sup>th</sup> September. A letter with more information detailing those works will be delivered to affected residents closer to the time.**